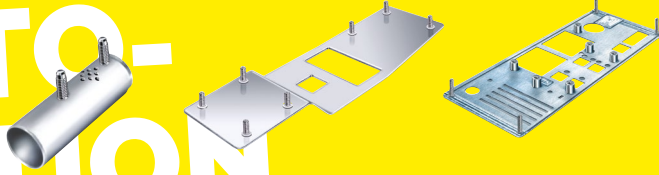




# STUD WELDING

## Processes & Applications

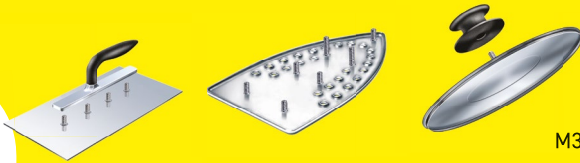
# AUTO-MATION



**Automation:**  
Highest productivity,  
ultimate positioning accuracy,  
perfect welding results.



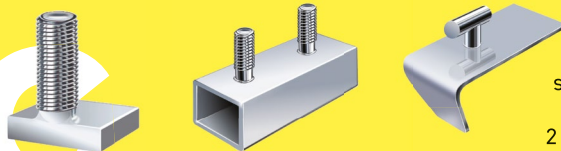
# CD



**CD - Capacitor Discharge:**  
Especially suited for  
thin sheet metal  
min. 0.5 mm (0.02"),  
automation, aluminium.  
Welding range:  
M3 to M8 (M10) [#4 to 5/16" (3/8")]



# ARC



**ARC - Drawn ARC:**  
Especially suited for welding  
on thicker sheet metal  
of 2 mm (0.08") and above.  
Weld protection with  
shielding gas or ceramic ferrule.  
Welding range:  
2 to 25 mm (14 ga to 1") diameter



# SC



**SC - Short-Cycle:**  
Especially suited for  
x-mas studs (ex. cable fixation),  
thin sheet metal,  
automotive industry  
and automation.



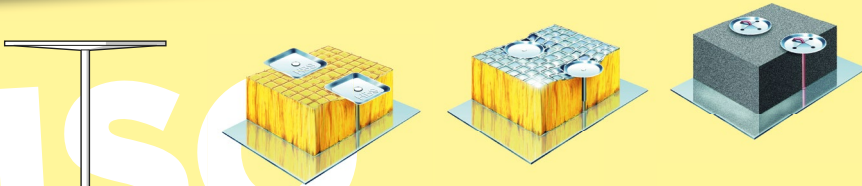
# MARC



**MARC - Magnetic rotating ARC:**  
The most innovative process for  
welding pad type elements.  
Welding range:  
Pads up to 30 mm (1.81")  
external diameter.



# ISO



**ISO - Insulation Market:**  
Economic fastening method of  
insulation mats HVAC  
(heating, ventilation,  
air-conditioning) and FRI  
(fire-resistant insulation)





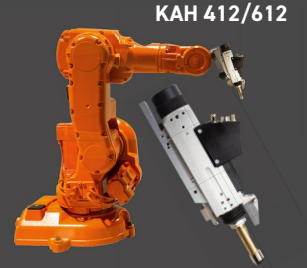
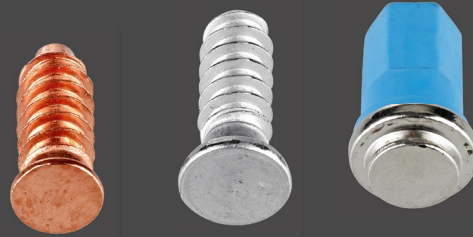
# STUD WELDING

## Industry & Branches



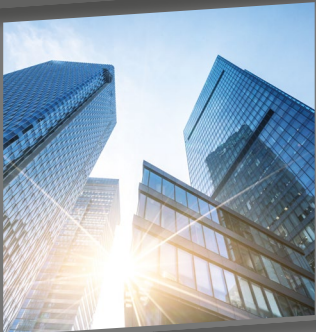
### Vehicle construction:

- Transport of passengers and goods
- Construction and commercial vehicles
- Special vehicles (e.g. for military)
- Agriculture
- Rail transport



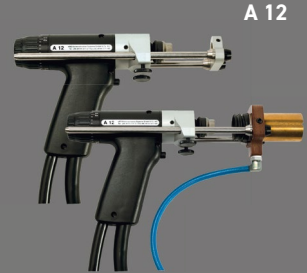
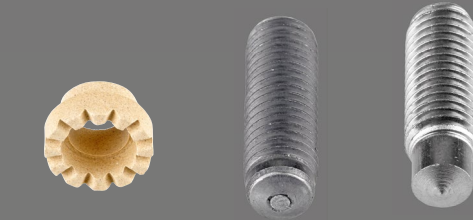
### Commerce + Private household:

- Kitchens
- Household appliances (irons, pots, washing machines, etc.)
- Automatic machines (money, drinks, tickets, cigarettes, etc.)
- Audio equipment
- Control consoles
- Switch cabinets
- Filling and packaging systems



### Construction industry:

- Facades
- Elevators
- Escalators and stairs
- Rails
- Halls



### Industrial systems:

- Power generation
- Steel production / steel construction
- Petrochemistry
- Bridge building



### Insulation:

- Heat and cold insulation
- Soundproofing
- Fire protection insulation
- Shipbuilding
- Refractories & Incinerators

